

**RPB-182**

**EN**

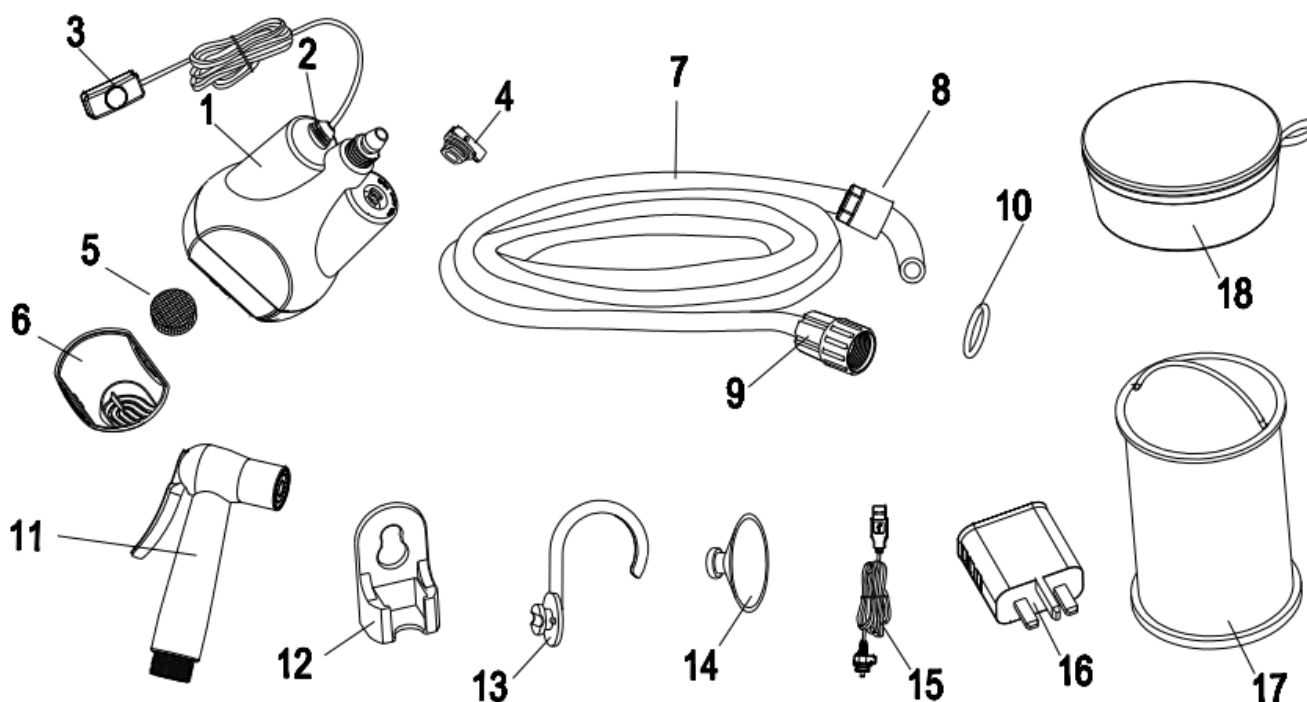
**Crownline Smart Bidet**

**AR**

**Instruction Manual**



## Overview



### Part Names:

- |                     |                       |
|---------------------|-----------------------|
| 1. Pump             | 10. O-ring            |
| 2. Rubber cover     | 11. Mini Spray head   |
| 3. On/off switch    | 12. Holder            |
| 4. Socket cover     | 13. Hook              |
| 5. Filter           | 14. Suction cup       |
| 6. Filter Cover     | 15. USB charging cord |
| 7. Hose             | 16. Adaptor           |
| 8. Inlet Connector  | 17. Folding bucket    |
| 9. Outlet Connector | 18. Storage bag       |

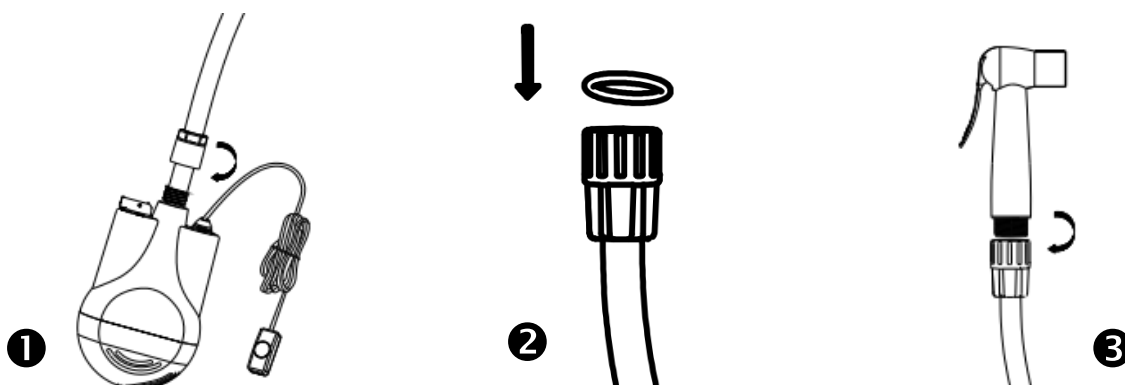
## Specifications

<b>Volt:</b>	3.7V	<b>Capacity of Battery:</b>	2200mAH
<b>Max. Electric Flow:</b>	2.2A	<b>Using time:</b>	45~60mins
<b>Water flow:</b>	2.5L/min	<b>Charging way:</b>	Any USB output of 5V, 0.5-2A
<b>Power supply:</b>	Lithium-ion Battery	<b>Charging time:</b>	1.5-5H (Depend on charging method)

## Using the Smart Bidet

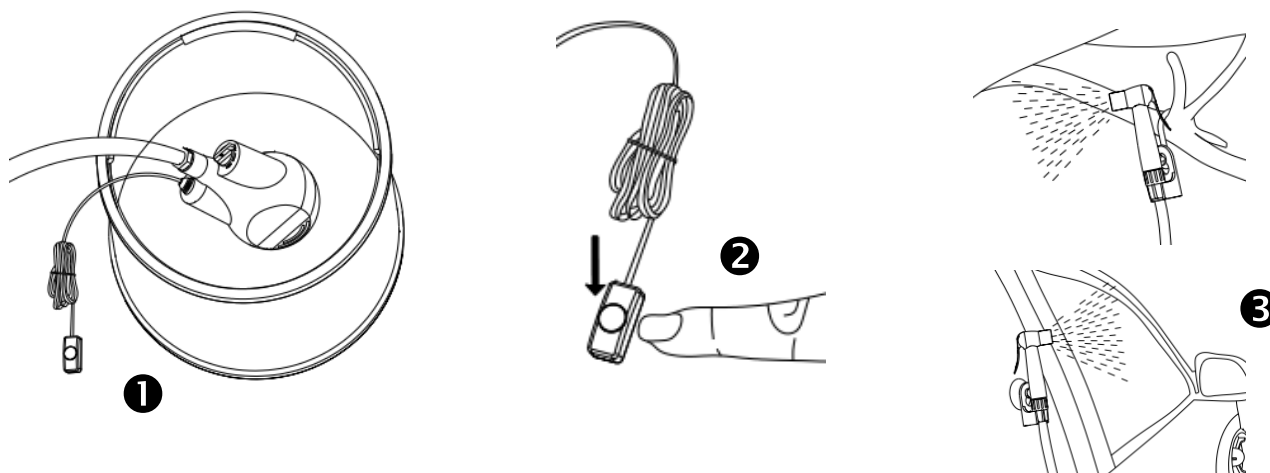
### Assembly

- ❶ Attach the inlet connector to the pump.
- ❷ Insert the o-ring into the outlet connector.
- ❸ Attach the outlet connector to the spray head. See to it that both connectors are tight.



### Usage

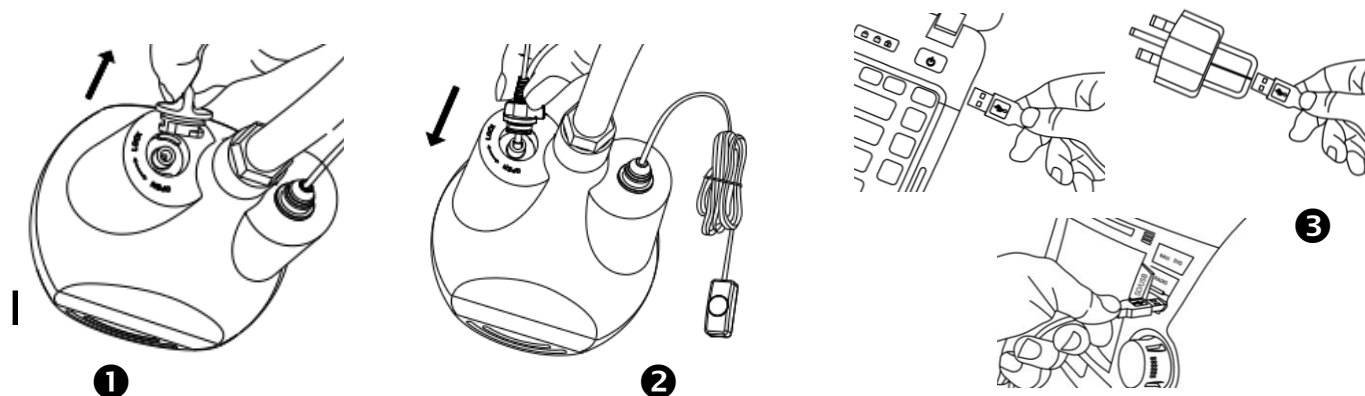
- ❶ Immerse the pump into water.
- ❷ Press the on-off switch to start the pump.
- ❸ Use the included hook or holder to hang and position the spray head. See to it that the pump is turned off before it is removed from the water. It should never operated without water.



### Charging

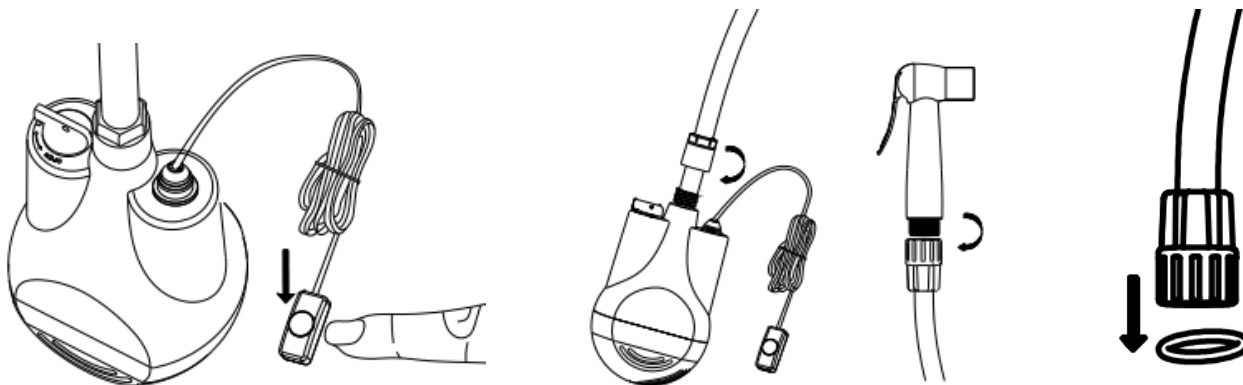
- ❶ Open the socket cover.
- ❷ plug the USB charging cable into the charging socket.
- ❸ Insert the USB connector in a computer, or included charger or a car charger.

Note: Charge the battery at least once every three months, even if you don't use it. The pump will turn off automatically if the voltage drops beneath 2.7V. Charge the battery anew.



## Disassembly

Turn off the pump by pressing the on-off switch. Unscrew the hose from the spray head and pump. Remove the o-ring from the outlet connector.



## Cleaning the filter

Open the filter cover. Clean both filter and cover. Assemble filter and cover when done.

